



# MONTHLY MEMBERSHIP PROGRESS REPORT

District 1 M

Results as of: 6/30/2017

GMT: OPEN

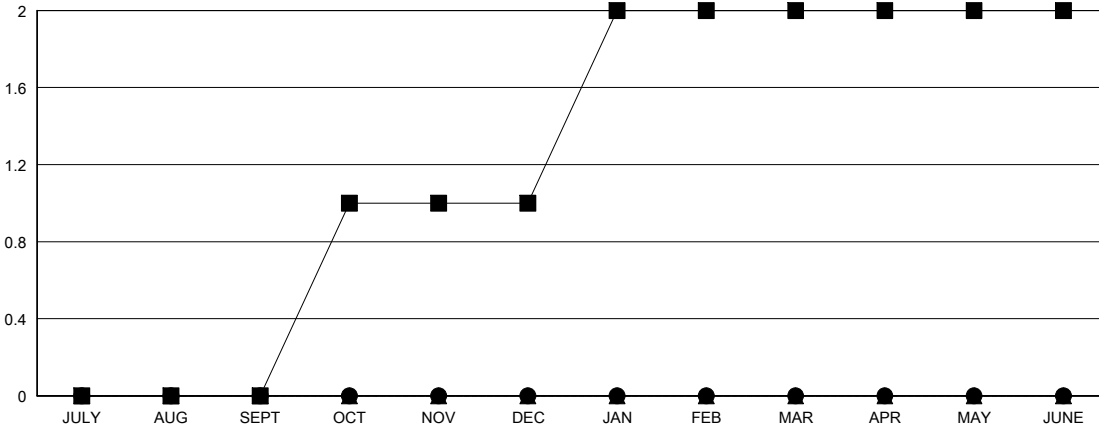
LOCATION ILLINOIS

GMT CA

Clubs			
RESULTS FOR 2016-2017			
QUARTER	NEW CLUB GOAL	NEW CLUBS	DROPPED CLUBS
JULY/AUG/SEPT	0	0	0
OCT/NOV/DEC	1	0	1
JAN/FEB/MAR	1	0	0
APR/MAY/JUNE	0	0	2

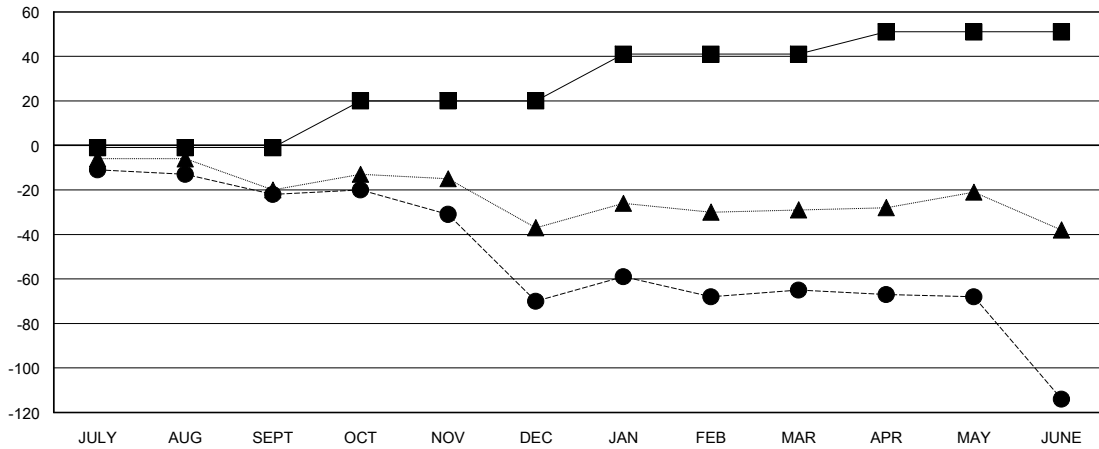
Members			
RESULTS FOR 2016-2017			
QUARTER	NEW MEMBER GROWTH NET GOAL (not reinstated or transfers)	NEW MEMBER GROWTH ACTUAL (not reinstated or transfers)	DROPPED MEMBERS ACTUAL (including transfers)
JULY/AUG/SEPT	-1	17	39
OCT/NOV/DEC	21	18	66
JAN/FEB/MAR	21	38	33
APR/MAY/JUNE	10	38	87

GOALS AND ACTUAL NEW CLUBS CUMULATIVE



- - CURRENT YEAR GOALS FOR NEW CLUBS
- - CURRENT YEAR ACTUAL NEW CLUBS
- ▲ - LAST YEAR ACTUAL NEW CLUBS

GOALS AND ACTUAL MEMBERS CUMULATIVE



- - NEW MEMBER GROWTH NET GOAL
- - NEW MEMBER GROWTH ACTUAL
- ▲ - LAST YEAR MEMBERSHIP ACTUAL

DROPPED CLUBS: 3	36 CLUBS OF 67 ADDED 1 OR MORE NEW MEMBERS	<u>GENDER DISTRIBUTION</u>
		MALE 1,403 (83.12%)
		FEMALE 285 (16.88%)
<u>DROPPED MEMBERS</u>	<a href="#">CLICK HERE FOR CUMULATIVE MEMBERSHIP DATA</a>	TOTAL FAMILY UNIT MEMBERS 191
DECEASED 23		FAMILY MEMBERS PAYING HALF DUES 97
CLUB CANCELLED 32		
OTHER 170		
<b>TOTAL 225</b>		